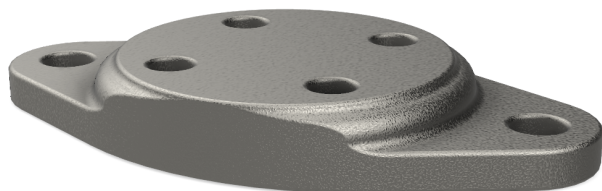


# Misc. Supports

## Type L Base for Flat Mounting



Base adapter fitting is for mounting an outdoor insulator to a flat surface.

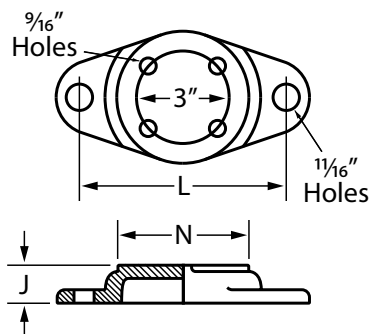


Fig. 1

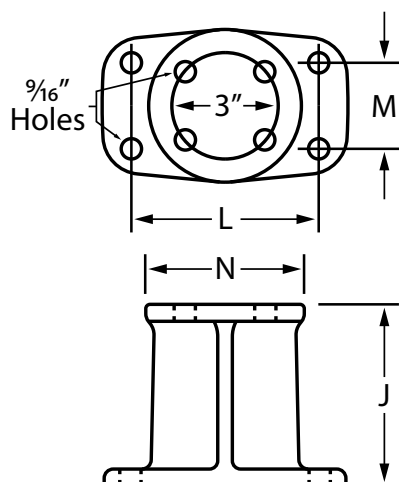


Fig. 2

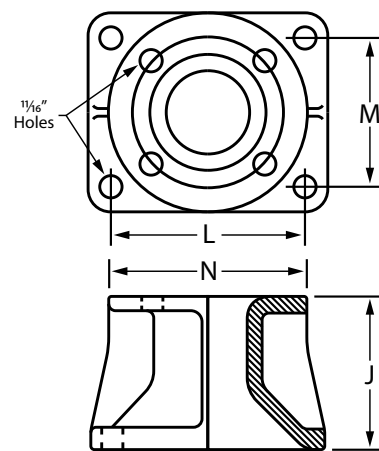


Fig. 3

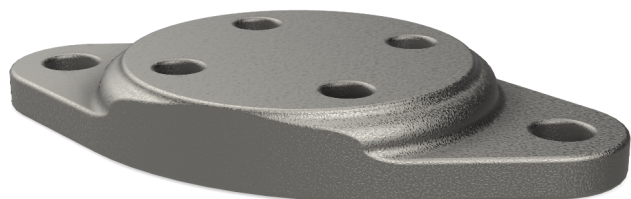
CATALOG NUMBER	BOLT-CIRCLE	DIMENSIONS IN INCHES				FIGURE NUMBER
		J	L	M	N	
632903	3"	1	6 1/2	-	4 1/4	1
632913	3"	5	5	2 1/2	4 1/4	2
632945	5"	5	6	5	6 3/8	3
632955	5"	5	8	5 1/2	6 3/8	3
632965	5"	5	8	8	6 3/8	3

(Type LH and LH3 on following page.)

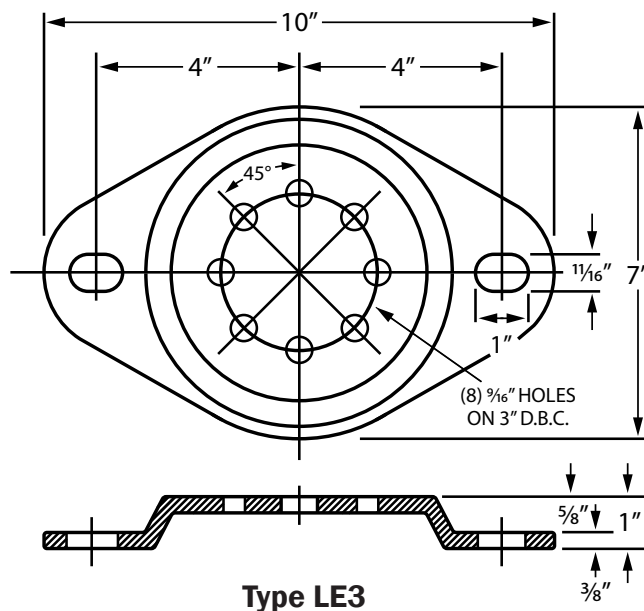
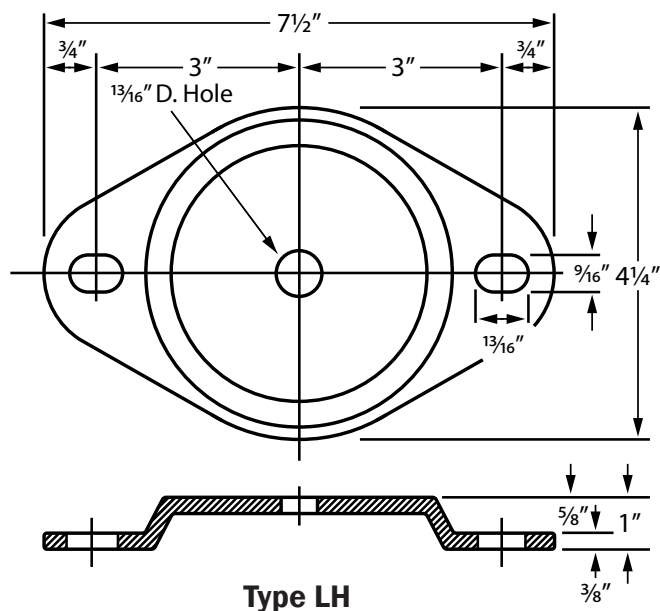


# Misc. Supports

## Type L Base for Flat Mounting



The type "L" base for flat mounting has been designed to offer secure mounting to any flat surface. Used primarily with standard duty assemblies, it has two slotted holes to allow for slight field adjustment between base and mounting structure bolts. Standard base height is 1". Type "LE3" can also be used with outdoor style 3" DBC insulators.



"LH"		"LE3"	
For Use With Class A-20 Insulator Center Bolt		For Use With Class A-30/B-30 Insulator 3" Bolt Circle Mounting	
Height "H"	Catalog Number	Height "H"	Catalog Number
1	331902	1	331923

